

Broad Street Plaza

Borough of Matawan - Monmouth County, NJ



UP TO 19,156 SF AVAILABLE

- 1,200 - 11,356 SF Available in mixed use building
- Up to 7,800 SF available in new Route 34 building
- Excellent location on the corner of Route 34 & Broad Street
- Daytime population of 51,154 (3 mile radius)
- 20,000 average daily traffic along Route 34
- Mixed use development featuring over 130 luxury residential units and over 23,675 of prime retail space
- 1 mile from Matawan Train Station with easy access to Garden State Parkway and Route 9

CATEGORY	3 MILES	5 MILES	7 MILES
POPULATION	70,271	143,088	279,155
TOTAL HOUSEHOLDS	27,028	54,579	103,490
AVG. HH INCOME	\$127,760	\$132,837	\$133,245
MEDIAN H.H. INCOME	\$106,924	\$105,556	\$120,262
TOTAL BUSINESSES	2,756	4,824	8,924
DAYTIME POPULATION	22,469	41,966	81,441

*SITES USA, 2019

Join:

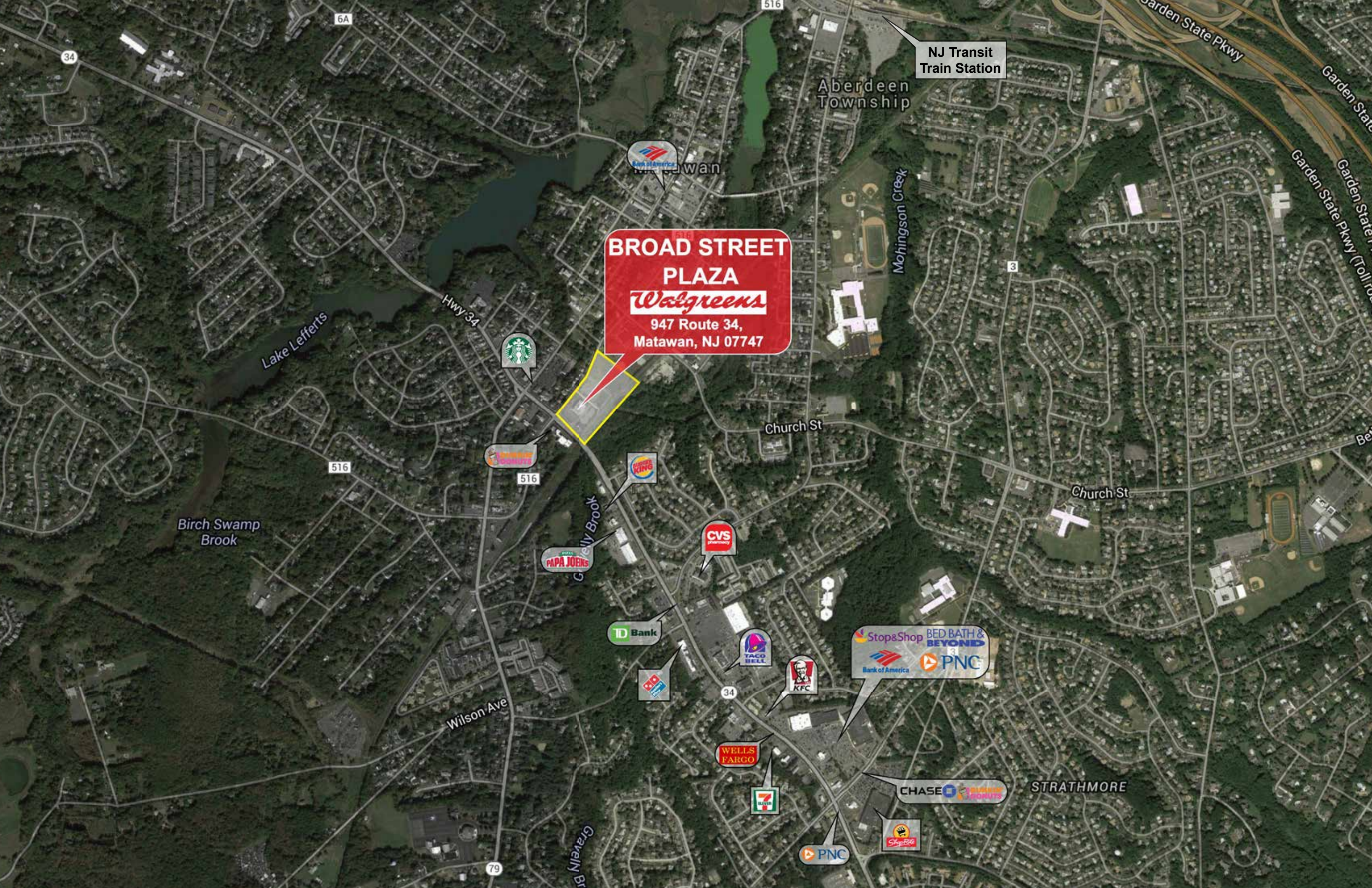
Walgreens

Lightbridge Academy

Justin's BARBERSHOP

ivyrehab PHYSICAL THERAPY





NJ Transit
Train Station

Aberdeen
Township

**BROAD STREET
PLAZA**
Walgreens
947 Route 34,
Matawan, NJ 07747



STRATHMORE

34

6A

516

516

516

34

79

3

Birch Swamp
Brook

Lake Lefferts

Hwy 34

Gravelly Brook

Wilson Ave

Church St

Church St

Garden State Pkwy

Garden State Pkwy

Garden State Pkwy

Garden State Pkwy

Garden State Pkwy

Garden State Pkwy

Garden State Pkwy

Garden State Pkwy

Garden State Pkwy

Garden State Pkwy

Garden State Pkwy

Garden State Pkwy