

# Broad Street Plaza

Borough of Matawan - Monmouth County, NJ



UP TO 21,185 SF AVAILABLE

- 1,200 - 13,385 SF Available in mixed use building
- Up to 7,800 SF available in new Route 34 building
- Excellent location on the corner of Route 34 & Broad Street
- Daytime population of 51,154 (3 mile radius)
- 20,000 average daily traffic along Route 34
- Mixed use development featuring over 130 luxury residential units and over 23,675 of prime retail space
- 1 mile from Matawan Train Station with easy access to Garden State Parkway and Route 9

Join:

**Walgreens**

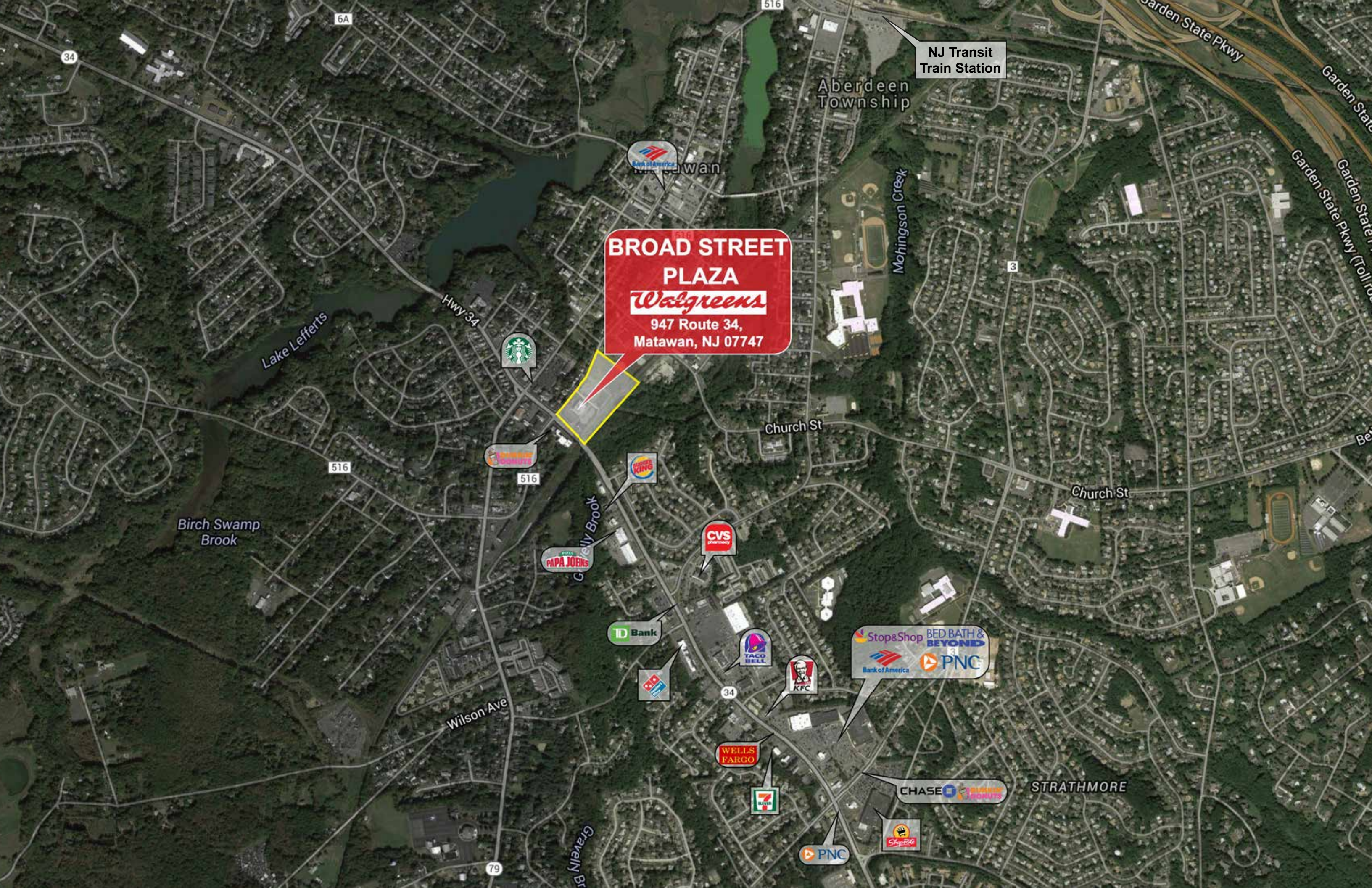
**Lightbridge Academy**

**Justin's BARBERSHOP**



CATEGORY	3 MILES	5 MILES	7 MILES
POPULATION	70,271	143,088	279,155
TOTAL HOUSEHOLDS	27,028	54,579	103,490
AVG. HH INCOME	\$127,760	\$132,837	\$133,245
MEDIAN H.H. INCOME	\$106,924	\$105,556	\$120,262
<b>TOTAL BUSINESSES</b>	<b>2,756</b>	<b>4,824</b>	<b>8,924</b>
<b>DAYTIME POPULATION</b>	<b>22,469</b>	<b>41,966</b>	<b>81,441</b>

\*SITES USA, 2019



**BROAD STREET  
PLAZA**  
*Walgreens*  
947 Route 34,  
Matawan, NJ 07747

NJ Transit  
Train Station

Aberdeen  
Township

Matawan

Mohingson Creek

Hwy 34

Lake Lefferts

Church St

Church St

Birch Swamp  
Brook

Wilson Ave

STRATHMORE

Gravelly Br